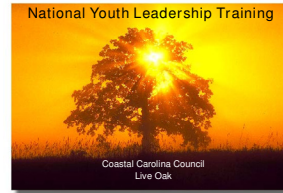


NYLT 2012

March 2-4th and 16-18th

Pre-Course Orientation



PLEASE READ THIS COMPLETELY PRIOR TO ATTENDING NYLT

The rules and regulations for attending NYLT are presented here and must be followed!!

The NYLT 2012 Leadership Course Adult Advisor and Youth Staff have put together this information regarding the Parent/Scout Orientation.

1. Scouts are placed into one of 4-8 teams. Team selection is based on the following criteria, in order of importance:
 - a. Scouts are grouped with Scouts other than from their home Troop/Crew
 - b. Scouts are grouped with adult or youth leaders other than from their Troop/Crew
 - c. Scouts are grouped with Scouts within their Age/Rank
2. At the same time that Scouts are reviewing their NYLT Goals, they have their Field Uniform inspected. Again, any deficiencies will require immediate fixing. **Scouts are required to be in full Field Uniform when they arrive at NYLT 2012. Anything less, and they will need to dig out the missing parts and dress before they are checked in, or they will have to return home.** The purpose of having each Scout as closely uniformed to every other Scout at NYLT 2012 (including staff) is so they see themselves as part of a team. Working in common as a team, they learn leadership through bringing together and using their own team's diversity. Venture crew members must have the Green Uniform shirt and long pants. The scout uniform is one of the

principles of scouting and it's important that these advanced scouts understand its importance.

3. **THE SCOUT UNIFORM IS A REQUIRED PART OF THE NYLT 2012 PROGRAM, IT WILL BE WORN THROUGHOUT THE COURSE!**

A Field Uniform at NYLT 2012 includes, the official BSA long or short sleeve shirt (short sleeves recommended) with red/green epaulettes and appropriate patches, official BSA shorts or slacks, official BSA belt (web or leather), and official BSA socks with sturdy hiking shoes. **No Flip-flops, clogs or open toe shoes will be allowed at anytime within camp except for showering.** Troop neckerchief and neckerchief slide are not worn at NYLT 2012. Venture scouts must wear the Green Uniform shirt when the field uniform is required. While we don't change their Troop patches, all patches on the uniform must be current, correctly placed (or removed from the uniform if not worn correctly), according to the BSA Handbook.

4. An Activity Uniform at NYLT 2012 consists of everything in a Field Uniform, except a NYLT 2012 Activity shirt (supplied at check-in) is substituted for the official BSA long or short sleeve shirt. During the course, Scouts will be required to be in Activity Uniform for all training functions, outdoor games, and activities. Scouts will wear the Field Uniform for evening flag ceremony and dinner. **There will be no exceptions. Activity shirts need to be brought back the second weekend!!**

5. Knowing that cost can be a factor for many Scouting families, consider these options for getting official Scout pants. "Experienced" Uniforms are available if requested in advanced , or think about borrowing these items from another Scout (hopefully about the same size as your Scout) in your troop.

6. In the event of cold weather, Scouts should be sure to bring long scout pants as well as shorts to the NYLT. The new scout pants allow for both. There are always gnats this time of year – remember your insect repellent.

7. **Electronics, cell phones, and other devices are not allowed at NYLT.** Any electronic device (with the exception of an approved GPS) in the possession of a participant will be confiscated. If you bring any cell phone or electronics, you assume all risks and the adult advisors will not deal with it being lost or stolen. Devices must be kept in backpack and turned off during all NYLT activities.
8. All parents are asked to remain at registration until they receive a green card with information on your son's Team and campsite in case of emergency. If there are any issues during check-in, you will be available to resolve any issues. Parents/guardian will be directed to a waiting area during check-in, the scouts will proceed to the registration/check-in process. During registration, the scout will provide any final payment due **(Scouts will not be allowed to check-in with a balance due or missing Annual Medical Forms.)** They will then proceed to the medical check-in where they will have to have their Annual medical form with a **Annual** medical forms are only valid for a year, therefore **no form dated prior to March 1, 2012 will be accepted.** If you receive a blue or red card, you should get your parent and come to the administration area. Issues will be resolved at that time. To ensure a speedy registration process, you will receive a card if there is an issue. At check-in, Scouts will be issued one (1) NYLT 2012 Activity shirts in their Team's color, a NYLT 2012 program booklet. Typically, they wear uniform shorts (or pants) with their activity shirts. You will then report to your Team area where the Guide will check for the proper uniform and required items. Once you are successfully checked-in you will be given a blue card with your information on your Team, campsite, troop guide, emergency contact information, and pick-up times. Give that card with information to your parent/guardian and they are free to leave.
9. **Scouts must be wearing closed toe sneakers, hiking shoes, or hiking boots.** The terrain, activities, traction, and weather conditions require a solid, firm, treaded platform under the feet during NYLT 2012. For health and

safety reason, we cannot allow Scouts to remain on course that do not have sturdy closed toe shoes.

10. The purpose of the NYLT 2012 National Youth Leadership Course is to provide Scouts that are either in a Unit leadership position or will most likely be entering a Unit leadership position in the near future, the knowledge and skills that position requires. It is not a summer camp experience! Traditional rank advancement, merit badges and crafts are not a part of the NYLT 2012 Leadership Course experience, but fun and games are!
11. NYLT 2012 practices the Team Method, Safe Haven Concept, and follows the Outdoor Code. Scouts will learn/enhance their skills in safe handling of food preparation and clean up, flag ceremonies, campfire ceremonies, cooking, organization, teamwork and team building, in addition to the leadership skills. As a safe haven and to promote friendship, fighting of any type including hitting, pushing, shoving, and name calling will not be permitted during the NYLT course.
12. While we have never had behavior problems at NYLT, we will send Scouts (both participants and staff) home for behavioral reasons. Generally, these incidents are dealing with the safety and welfare of the Scout and/or other participants. We do have a set procedure in place to handle behavioral issues. When an issue is identified, it will first be dealt with by the Team with counseling from the Guide and Assistant Course Leader. The next step of escalation is to take the issue to the Senior Team Leader. If the Senior Team Leader cannot resolve the issue, then the issue will be raised with the Course Director who will make the final decision. The decision of the course director is final. Most issues that reach the level of the Course Director result in expulsion from the course, because the course is run by the Senior Team Leader. We expect parents to respond immediately to your son's needs, if they are called. This may include coming out to Camp Ho Non Wah late at night.
13. There is an adult staff member and youth staff member assigned to each Team of Scouts. Usually a Team will consist of 8 Scouts. In addition, there are three youth instructors, one youth quartermaster, one adult quartermaster, two

Assistant Course Directors (both over age 18), a Senior Team Leader, four Assistant Senior Team Leader, one adult medic, and the Course Director (22 staff /advisor members total, 8 of which are adults). In total, there is one staff member for every two Scout participants. These numbers help us keep a safe environment for the Scouts, and also give the ultimate leadership experience to youth staff members, enhance the leadership skills of adults leaders.

14. If there are any **medical or dietary needs or need for any special accommodations**, parents should immediately contact the NYLT Course Director (Peter Kinslow 324-2368). The Course Director will be able to direct you in contacting and discussing those needs with the medic, food quartermaster, or other appropriate staff personnel.
15. NYLT 2012 Leadership Course has a staff member assigned to Health. Medications must arrive in their original containers with clear instructions on dosage. It is important for any medical needs to be brought to their attention at or prior to check-in. A BSA Annual Medical Form Part A, B and C Form was enclosed in the acceptance packet and is expected prior to arriving or on arrival at NYLT 2012. **PLEASE NOTE: You will not be able to remain at camp without a valid medical form.**
16. Medications must arrive in their original containers with clear instructions on dosage. Scouts are responsible for taking their medicines at the prescribed time and dosage. We will make every effort to remind the scout but we will not keep medicines or provide dosages. Unfortunately, NYLT 2012 is not equipped to deal with long-term illness. We take every step possible to keep the Scouts at NYLT 2012 for the entire course, and only have them removed when they are unable to attend the sessions or when they become a serious detriment to the program.
17. Camp Ho Non Wah is not close to any emergency medical facilities therefore scouts must bring an emergency inhalers, EPIPEN, or other emergency item if required.

18. Scouts should be equipped for all varieties of weather. While spring in the Low Country usually offers warm days and evenings. Biting insects are a given at Ho Non Wah in the spring – **BRING INSECT REPELLENT and SUNTAN LOTION!!** Many of the activities will be outside. We have had rain, high winds and other nasty weather during previous NYLT, so appropriate clothing in sufficient quantities is recommended. Be Prepared! Dehydration is always a concern at camp where activities are numerous and outside. You should have a water bottle and drink at least 3 bottles a day of water. Scouts must also have a water bottle, tent, sleeping bag and pad. An equipment list has been provided for all of these items and sent with the letter of acceptance to NYLT 2012.
19. Because the Scouts arrive not knowing any people in their Team, they are usually intimidated with sharing tents with strangers. Each scout should be prepared to sleep in their own tent. The second weekend includes an outing which requiring a short backpacking trip, we encourage the use of light backpacking tents, each participant will need a tent or to share a tent with someone each weekend. ***The camp tents will not be provided.***
20. Check in at NYLT 2012 begins promptly between **FIVE and Five-Thirty PM** on each Friday. Unfortunately, our schedule does not allow for early check-in and we are not ready to accept check-ins prior to that time. If you do arrive early, please be prepared to enjoy the scenery at camp while you wait. The NYLT 2012 Leadership course depends on the group participation to achieve the goals of the course. With this advanced training is important that the scouts complete every activity in order. Therefore, we expect all scouts **to be on-time for the course.** There are only two Fridays that will require special consideration for arriving on-time.
21. **Dinner will not be served on Friday evenings.** The scouts should either eat prior to arrival at camp or bring a bag dinner with them. This is for both weekends of the course.
22. Please pick your son up promptly at the end of each weekend on Sunday @ 3:00pm. It is important that the scout attend the entire course, therefore any scout needing to leave early will require approval by the NYLT Course Director.

Note: Any scout leaving early will not complete the requirements for the course and will not be eligible for NAYLE. This will only be approved with emergency requirements. The registration clearly stated that you were committing to attending the entire course. The staff has commitments as well after the course and can not wait for scouts to be picked up. Scouts not picked-up within 30 minutes of course completion may not be accepted back into program.

23. Families and friends are encouraged to attend graduation ceremonies on Sunday March 18th at 2:30pm . Plan to arrive between 2:00pm and 2:25pm, please proceed directly to the Council Ring if the weather is good. We are completing important activities in the dining hall and can not allow parents at that time. Again, we ask that you do not arrive early, since the Scouts will be striving to keep to their schedule while working on getting their Team's equipment cleaned and readied for checkout. Graduation is at 2:30pm. For those with mobility needs, please notify the Course Director so that arrangements can be made for transport to the ceremony.